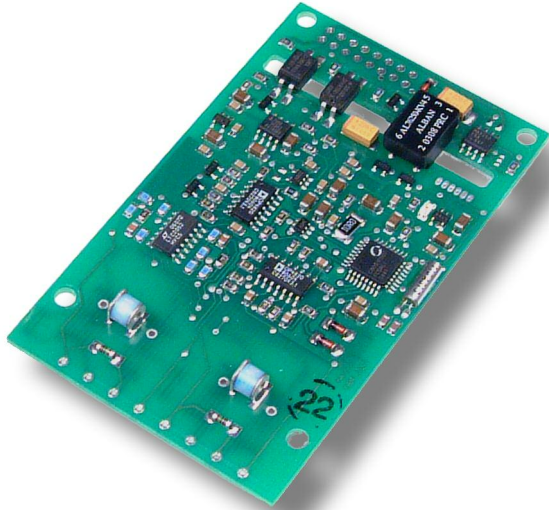


# EG02000

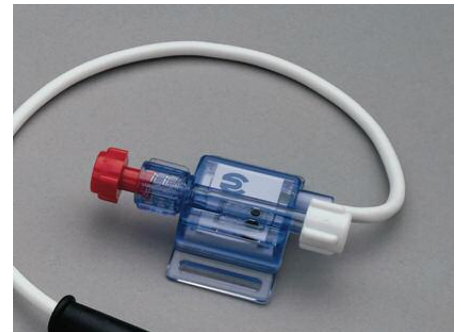
## Invasive Blood Pressure Module



# IBP

[oem.medlab-gmbh.de](http://oem.medlab-gmbh.de)

- Two channels
- Works with standard pressure transducers of  $5\mu\text{V/V/mmHg}$
- Simulation mode built-in for easy integration into user system
- Waveform transmission speed selectable (50, 100 and 150 Hz)
- Displays static pressures and waveforms
- Integrated pulse rate detection: 30 bpm - 250 bpm
- Automatic detection of systolic, mean, and diastolic blood pressure
- Measuring range -10 mmHg to +300 mmHg ( $\pm 1\%$  accuracy)
- Zero point can be shifted by  $\pm 50$  mmHg
- Zeroing commands built-in - independently for both channels
- Transmission of pulse rate, systolic-, mean- and diastolic pressure
- Status messages and commands send over the serial interface
- Lifetime calibration
- Complies with IEC601-2-34
- Defibrillation protection and Patient isolation built-in
- Very small size: 88 x 53 mm, maximum thickness 10mm
- Power supply: 5 Volt, one supply voltage only
- Power consumption: 0.5W max, depending on transducer impedance



# medlab

medizinische Diagnosegeräte GmbH

Erzbergerstrasse 115

D 76133 Karlsruhe

Germany

Tel.: +49 (0) 721 62512 0

FAX: +49(0)721 62512 12

[sales@medlab-gmbh.de](mailto:sales@medlab-gmbh.de)